

Wuskwatim Generating Station
Monthly Compliance Report for August 2014

Wuskwatim Power Limited Partnership received Environment Act Licence No. 2699 and an Interim Water Power Act Licence in 2006 for the development of Wuskwatim Generating Station. Section 33 of the Environmental Act Licence for the Wuskwatim Generating Station requires regular monthly reporting on the Wuskwatim Hourly Water Level, Wuskwatim Mean Daily Water Level (with wind and wave effects eliminated) and the Birchtree Lake Daily Change in Water Level.

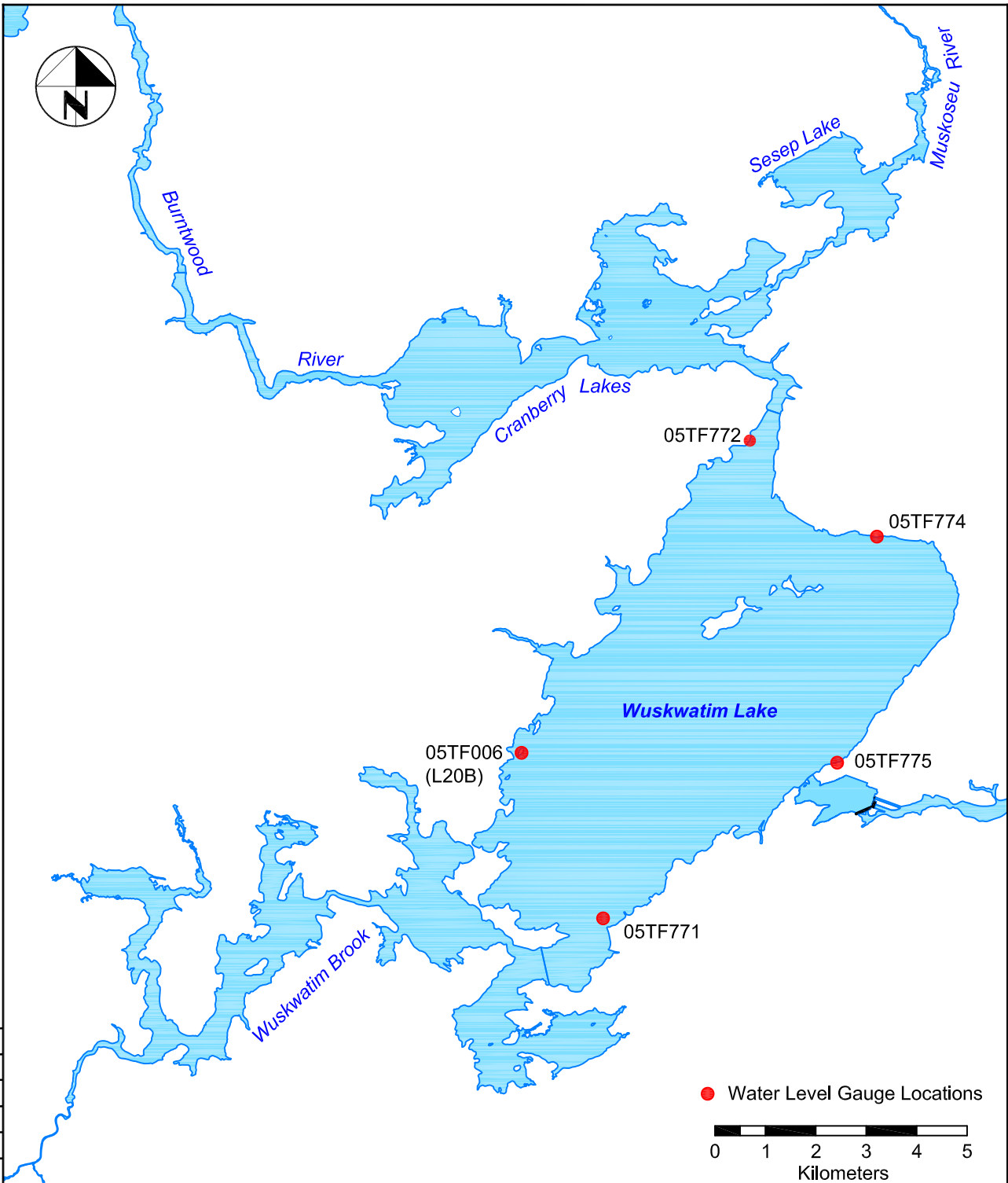
Figure 1 is a general location plan of the Wuskwatim Lake water level gauges used to generate the data for this report. Figure 2 is a general location plan of the Birchtree Lake water level gauges.

Wuskwatim Lake Hourly Water Levels ranged between 233.79 m and 233.96 m for the month of August (Figure 3).

Wuskwatim Lake Mean Daily Water Level (with wind and wave effects eliminated) ranged between 233.85 m and 233.91 m for the month of August (Figure 4).

The maximum Birchtree Lake Daily Change in Water Level was 0.12 m (Figure 5)

Manitoba Conservation and Water Stewardship were notified of the licence violation.



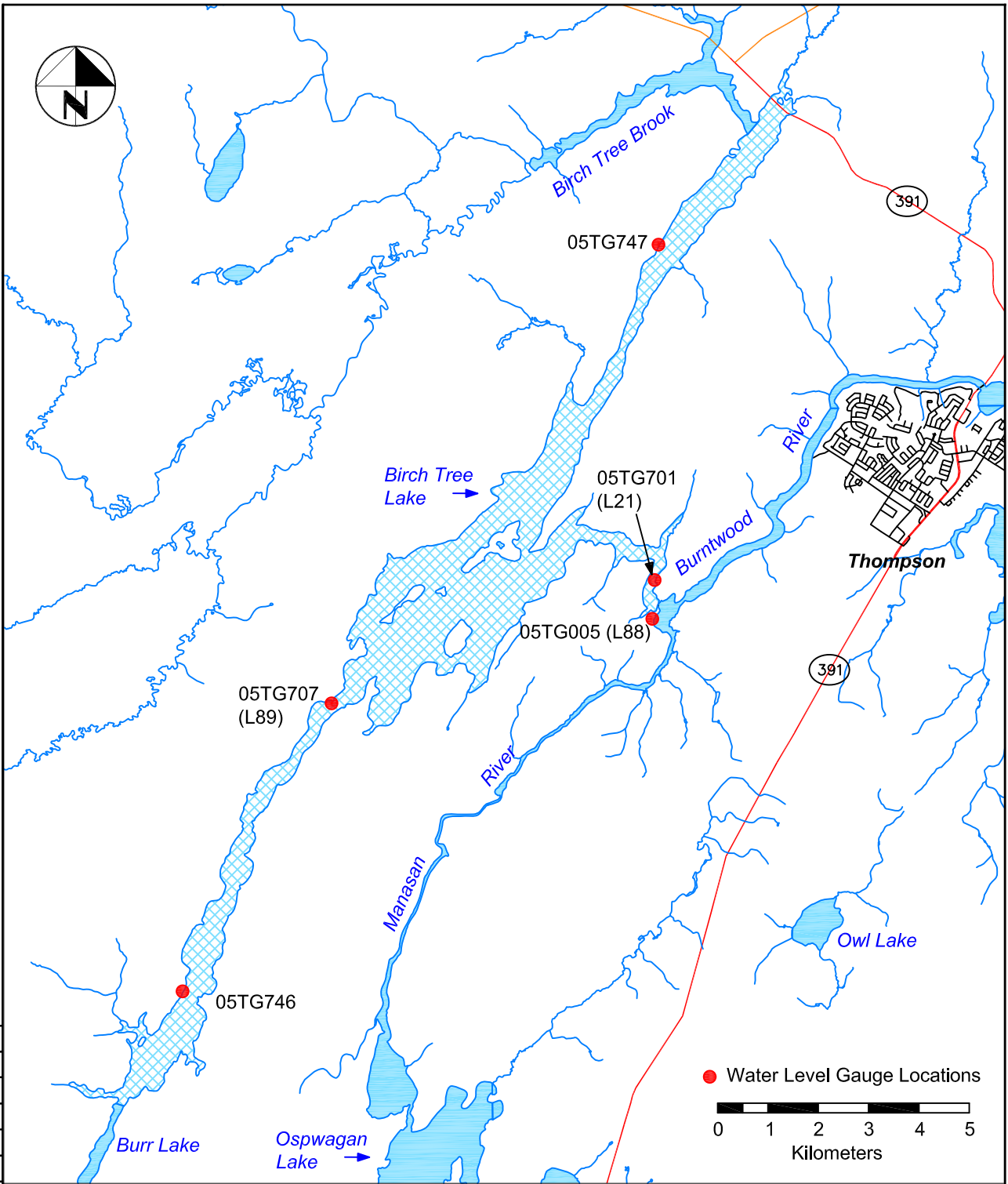
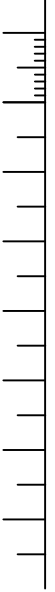
● Water Level Gauge Locations

0 1 2 3 4 5
Kilometers

FOR MICROFILMING USE ONLY

NOTED	NO.	DATE	REVISIONS	BY	CKD.	APP.
DESIGN			MANITOBA HYDRO WUSKWATIM GENERATING STATION			
TELEPHONE						
ELECTRICAL			WATER LEVEL GAUGE LOCATIONS ON WUSKWATIM LAKE			
F.P. ENGINEER						
MECHANICAL	DRAWN	K.R.	FIGURE 1			
DISTRIBUTION	DESIGN	BG				
PROJECT	DSCALE	AS SHOWN	0001		00	
CONSTRUCTION	PSCALE	1/8" = 1'-0"				
MANAGER	DATE	05/09/15				

AUTOCAD ORIGINAL



FOR MICROFILMING USE ONLY

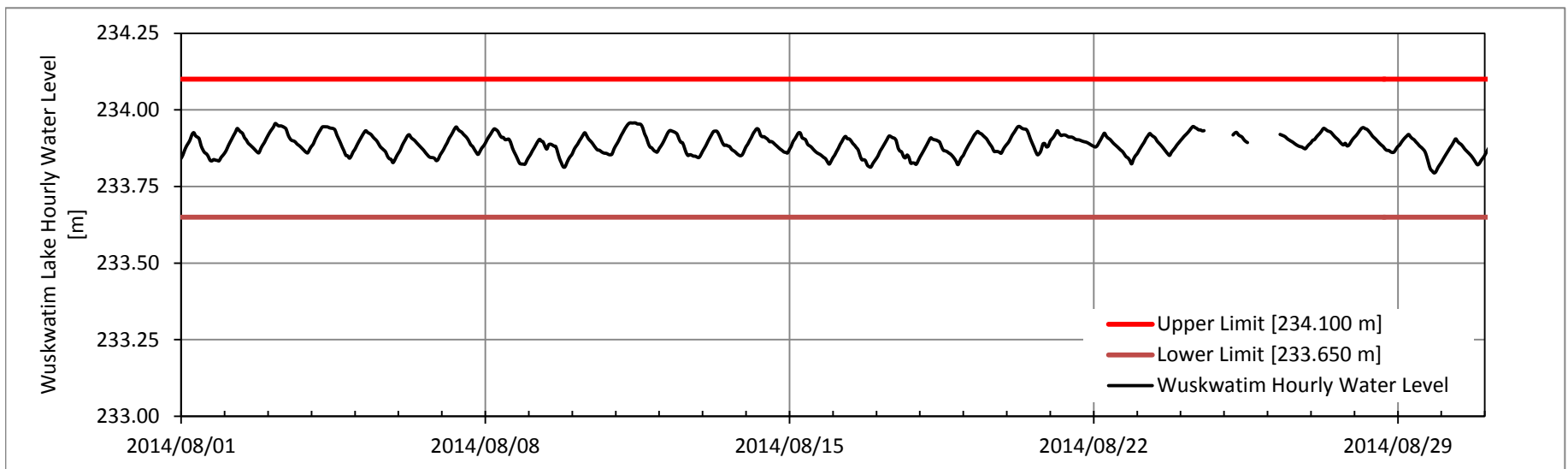
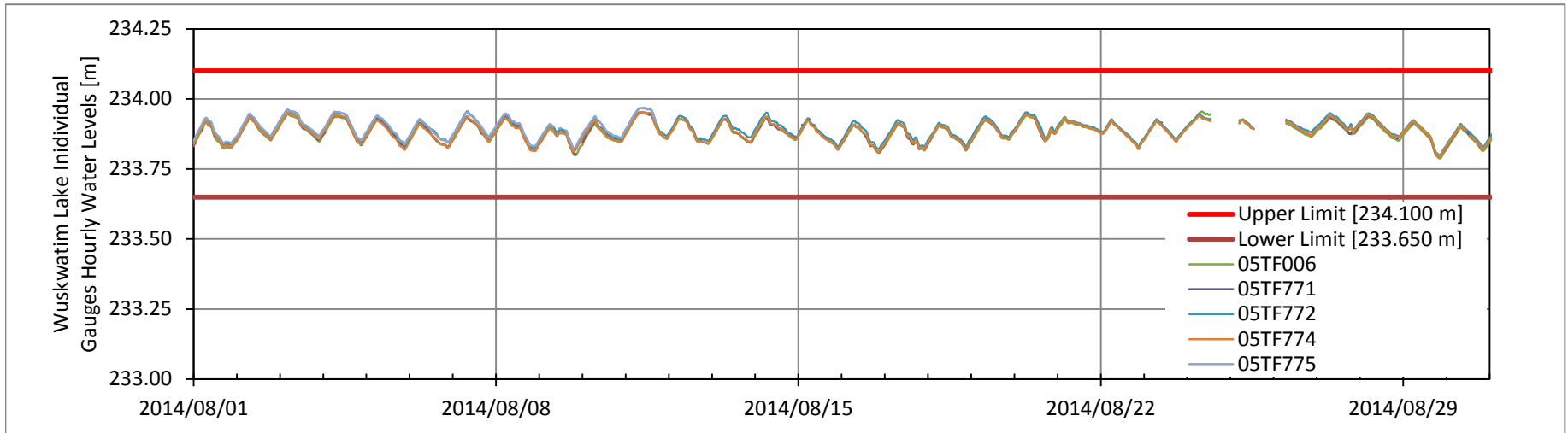
NOTED	NO.	DATE	REVISIONS	BY	CKD.	APP.
DESIGN			MANITOBA HYDRO WUSKWATIM GENERATING STATION WATER LEVEL GAUGE LOCATIONS ON BIRCHTREE LAKE			
TELEPHONE						
ELECTRICAL						
F.P. ENGINEER						
MECHANICAL	DRAWN	K.R.				
DISTRIBUTION	DESIGN	BG				
PROJECT	DSCALE	AS SHOWN				
CONSTRUCTION	PSCALE	1/8" = 1'-0"				
MANAGER	DATE	05/09/15				
				SHT.		REV.
				0001		00

FIGURE 2

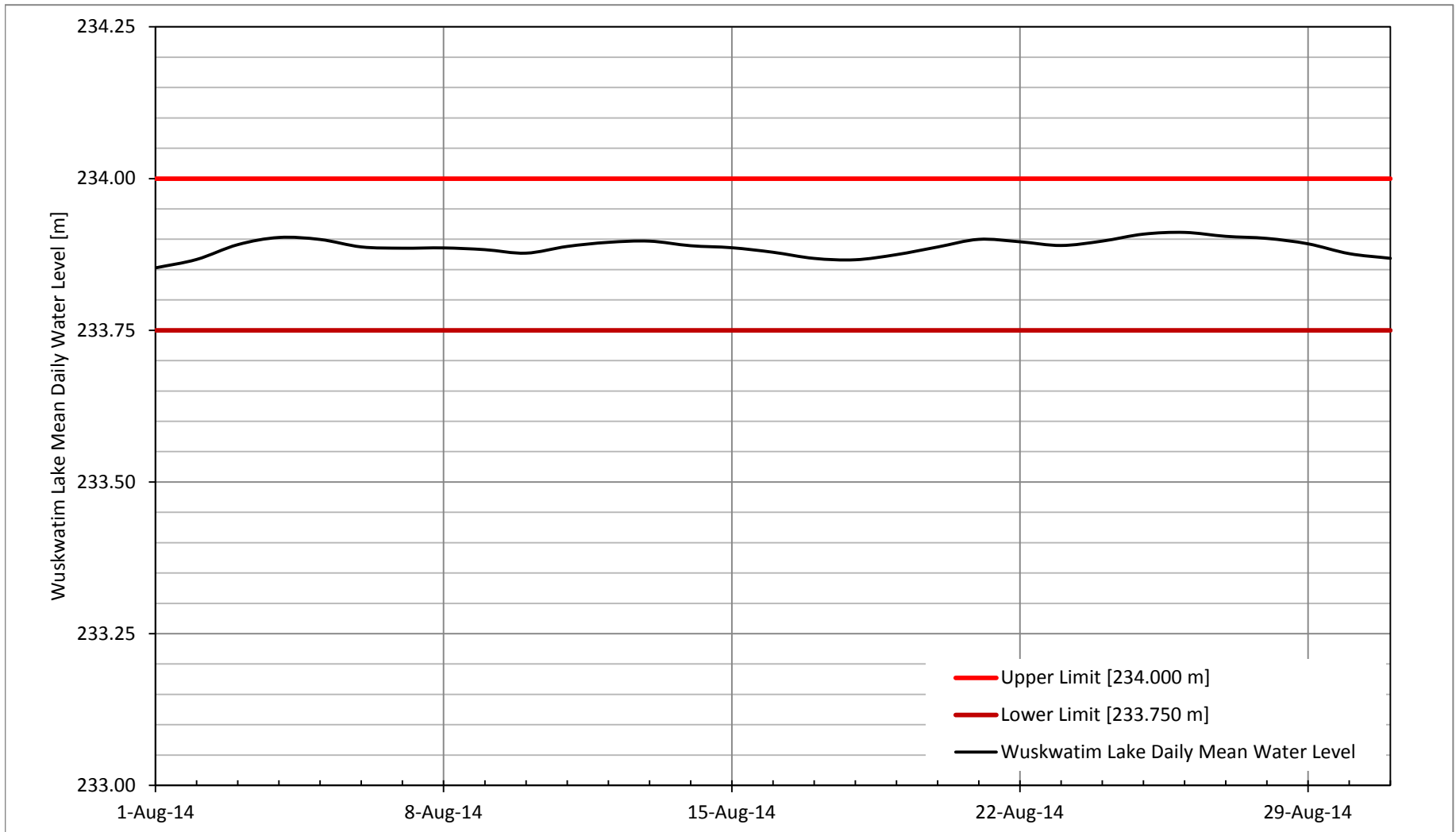
* REDUCED SIZED PLOT

AUTOCAD ORIGINAL

Wuskwatim Generating Station - Wuskwatim Lake Hourly Water Levels
Monthly Compliance Report for August 2014

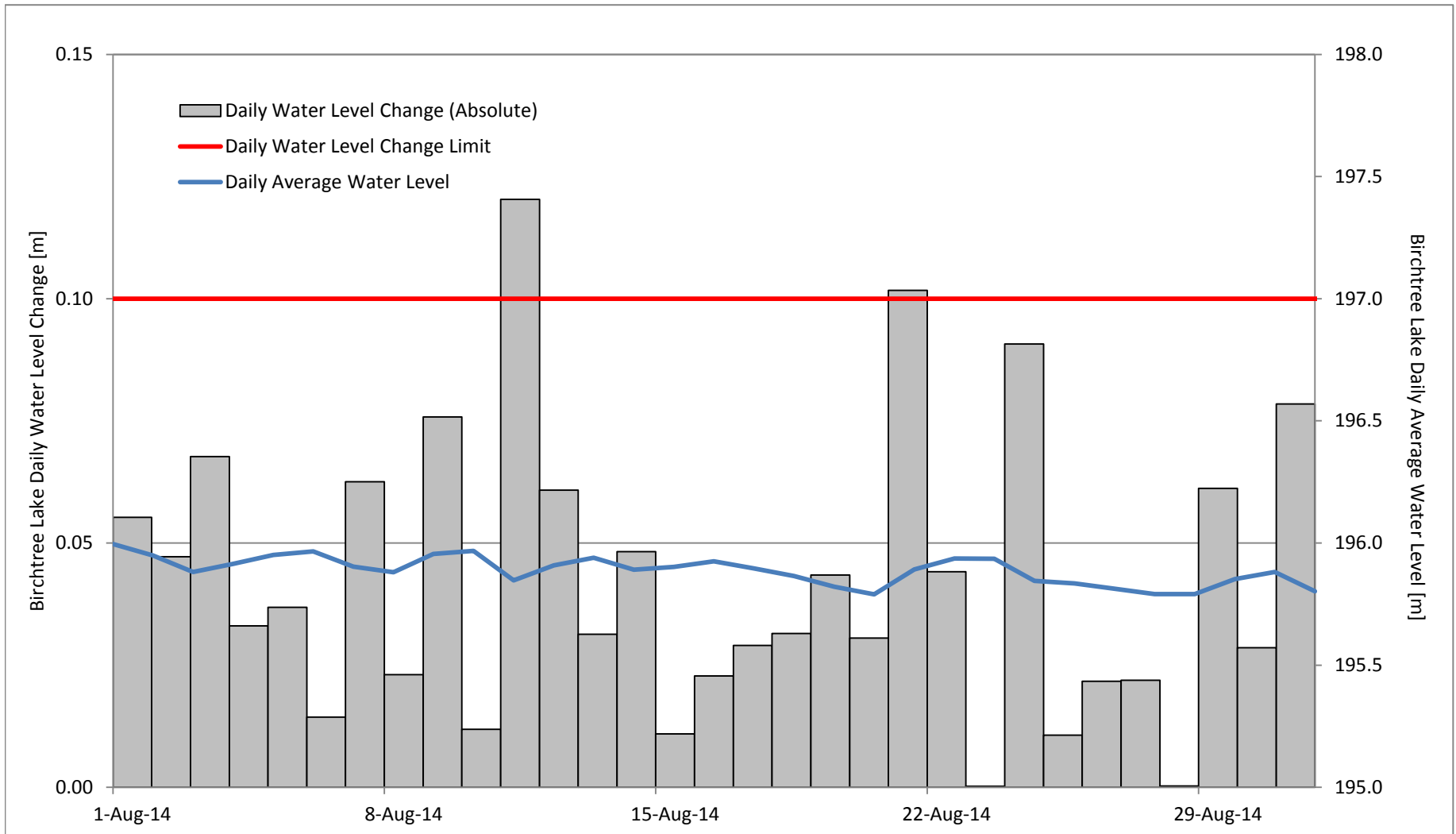


**Wuskwatim Generating Station - Wuskwatim Lake Mean Daily Water Level
Monthly Compliance Report for August 2014**



Note: Wuskwatim Lake Mean Daily Water Level is calculated using Wuskwatim Lake gauges 05TF006, 05TF771, 05TF772, 05TF774, & 05TF775

**Wuskwatim Generating Station - Birchtree Lake Daily Water Level Change
Monthly Compliance Report for August 2014**



Note: The Birchtree Lake Daily Water Level Change is calculated using Birchtree Lake gauges 05TG701, 05TG707, 05TG746, & 05TG747
The daily water level change limit is equal to 0.1 m in open water conditions (May 1 to October 31) and 0.15 m in winter conditions (November 1 to April 30)