

Wuskwatim Generating Station
Monthly Compliance Report for August 2017

Wuskwatim Power Limited Partnership received Environment Act Licence No. 2699 and an Interim Water Power Act Licence in 2006 for the development of Wuskwatim Generating Station. Section 33 of the Environmental Act Licence for the Wuskwatim Generating Station requires regular monthly reporting on the Wuskwatim Hourly Water Level, Wuskwatim Mean Daily Water Level (with wind and wave effects eliminated) and the Birchtree Lake Daily Change in Water Level.

Figure 1 is a general location plan of the Wuskwatim Lake water level gauges used to generate the data for this report. Figure 2 is a general location plan of the Birchtree Lake water level gauges.

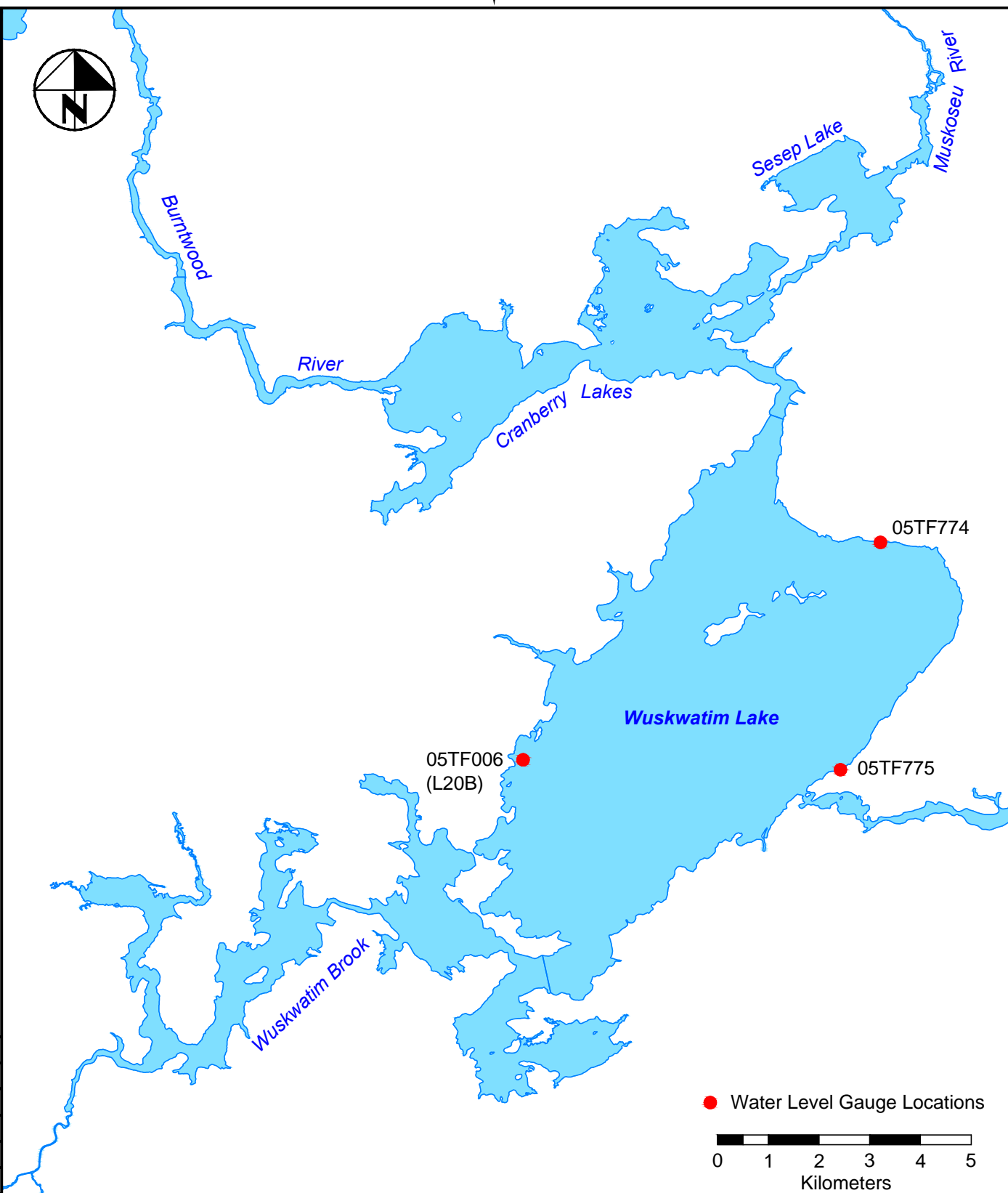
Wuskwatim Lake Hourly Water Levels ranged between 233.79 m and 234 m for the month of August (Figure 3).

Wuskwatim Lake Mean Daily Water Level (with wind and wave effects eliminated) ranged between 233.87 m and 233.97 m for the month of August (Figure 4).

The maximum Birchtree Lake Daily Change in Water Level was 0.185 m (Figure 5)

The Department of Sustainable Development was notified of the licence violations.

A SIZE - 184 X 279



● Water Level Gauge Locations

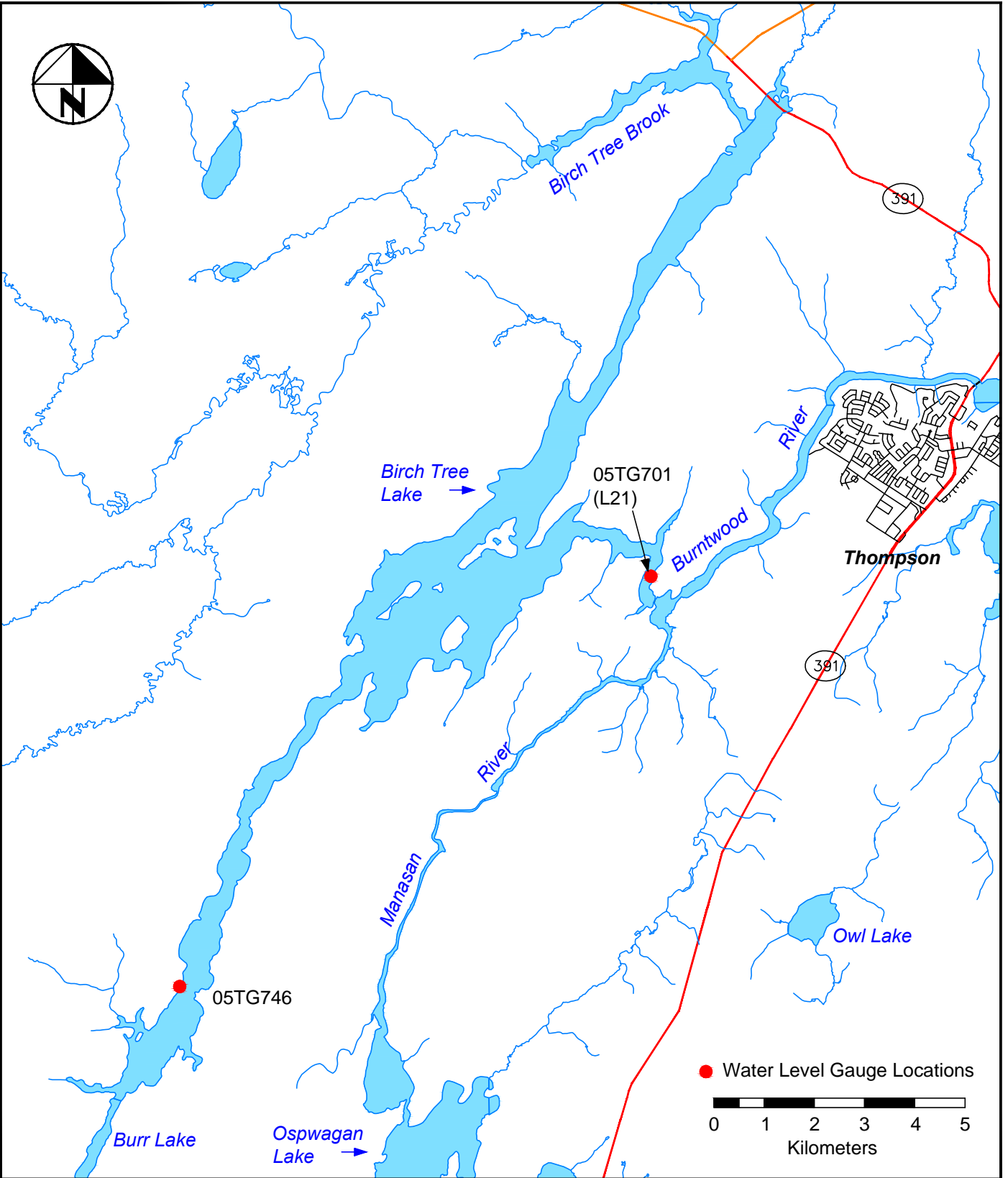
0 1 2 3 4 5
Kilometers

FOR MICROFILMING USE ONLY

NOTED	NO.	DATE	REVISIONS	BY	CKD.	APP.
DESIGN			MANITOBA HYDRO			
TELEPHONE			WUSKWATIM GENERATING STATION			
ELECTRICAL			WATER LEVEL GAUGE LOCATIONS ON WUSKWATIM LAKE			
F.P. ENGINEER						
MECHANICAL	DRAWN	K.R.				
DISTRIBUTION	DESIGN	BG				
PROJECT	DSCALE	AS SHOWN				
CONSTRUCTION	PSCALE	1/8" = 1'-0"			SHT.	REV.
MANAGER	DATE	15/02/03			0001	00

AUTOCAD ORIGINAL

* REDUCED SIZED PLOT



FOR MICROFILMING USE ONLY

NOTED	NO.	DATE	REVISIONS	BY	CKD.	APP.
DESIGN			MANITOBA HYDRO			
TELEPHONE			WUSKWATIM GENERATING STATION			
ELECTRICAL			WATER LEVEL GAUGE			
F.P. ENGINEER			LOCATIONS ON			
MECHANICAL	DRAWN	K.R.	BIRCHTREE LAKE			
DISTRIBUTION	DESIGN	BG				
PROJECT	DSCALE	AS SHOWN				
CONSTRUCTION	PSCALE	1/8"=1'-0"				
MANAGER	DATE	15/02/03				
				SHT.	REV.	
				0001	00	

AUTOCAD ORIGINAL

Wuskwatim Generating Station - Wuskwatim Lake Hourly Water Levels
Monthly Compliance Report for August 2017

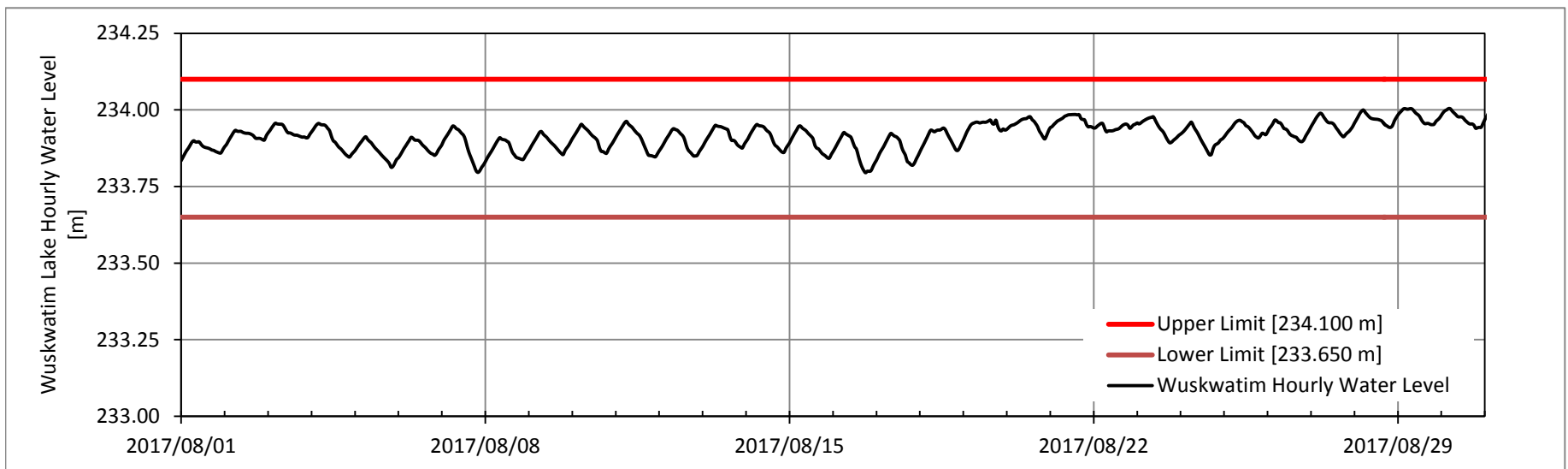
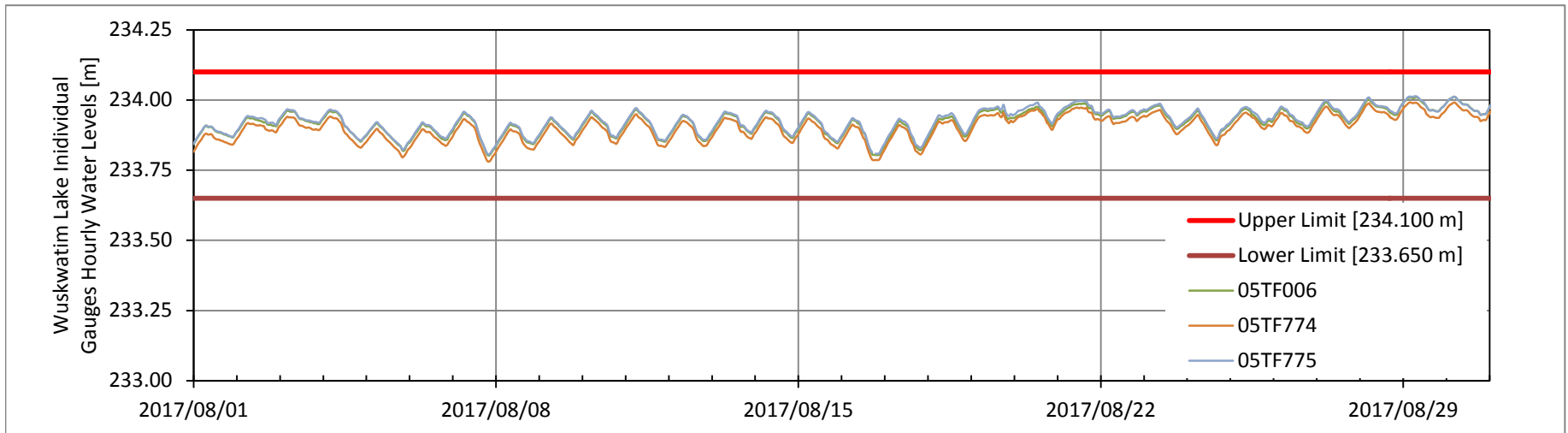
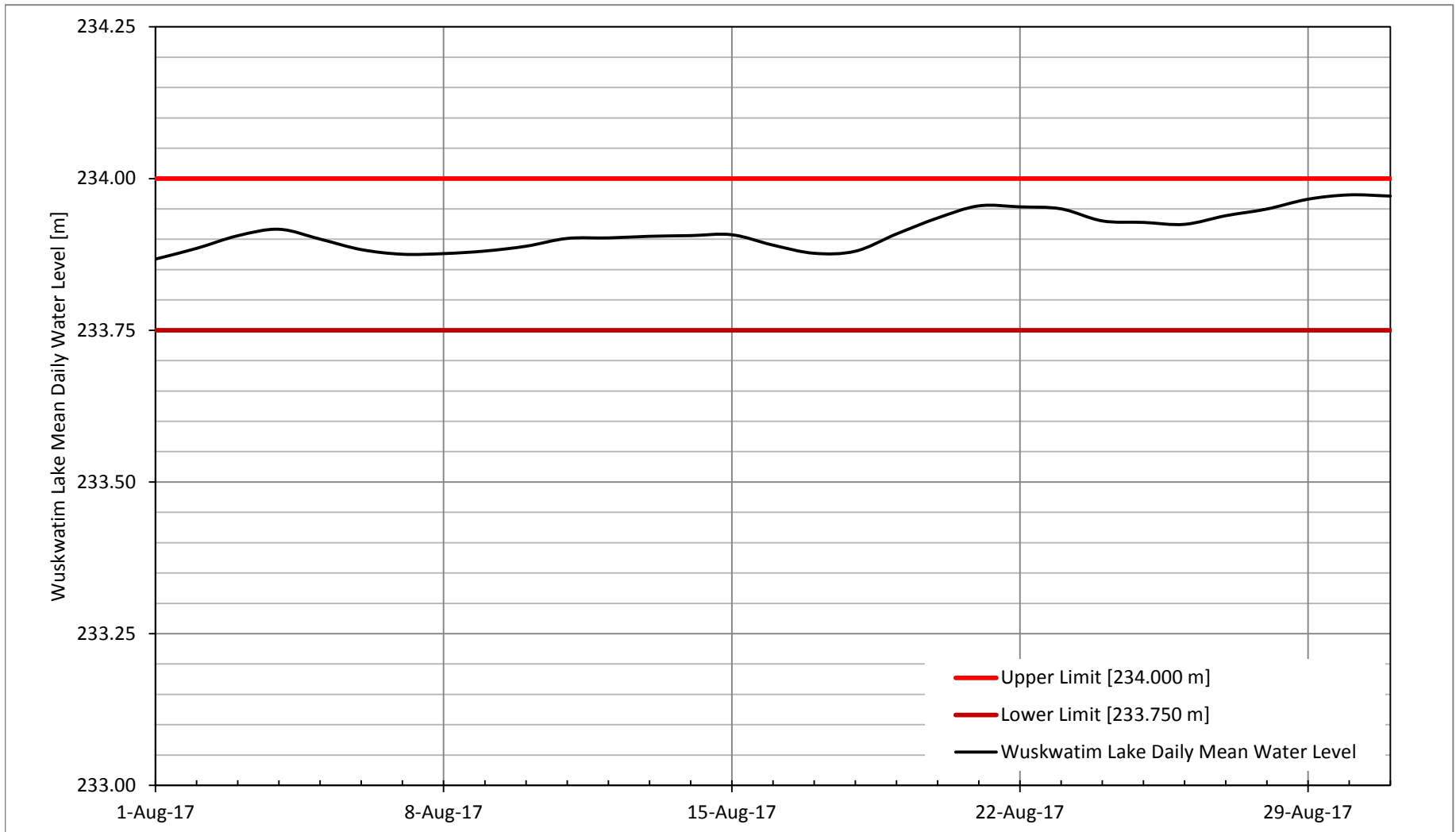


Figure 3

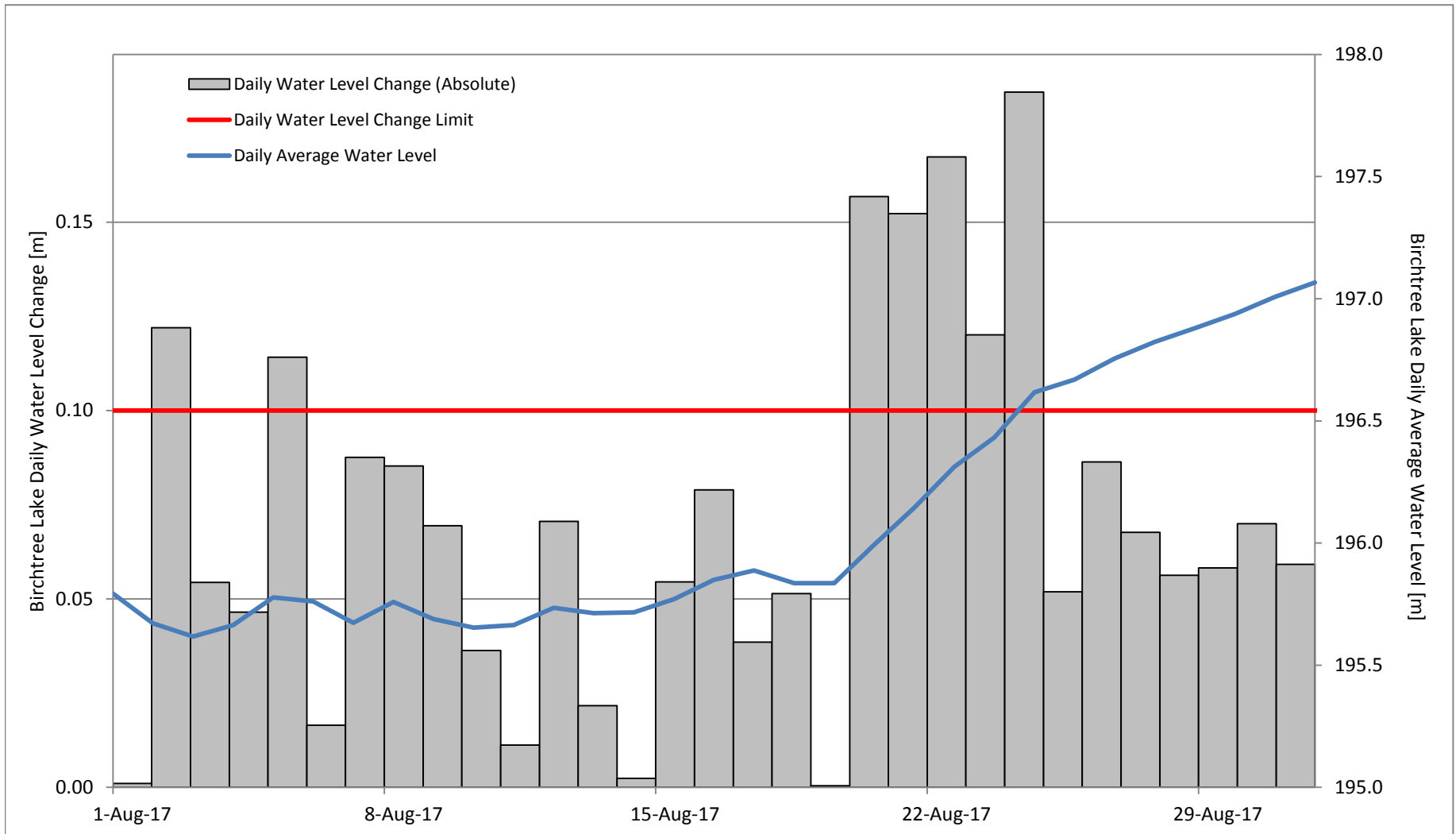
**Wuskwatim Generating Station - Wuskwatim Lake Mean Daily Water Level
Monthly Compliance Report for August 2017**



Note: Wuskwatim Lake Mean Daily Water Level is calculated using Wuskwatim Lake gauges 05TF006, 05TF774, & 05TF775

Figure 4

**Wuskwatim Generating Station - Birchtree Lake Daily Water Level Change
Monthly Compliance Report for August 2017**



Note: The Birchtree Lake Daily Water Level Change is calculated using Birchtree Lake gauges 05TG701, 05TG746
 The daily water level change limit is equal to 0.1 m in open water conditions (May 1 to October 31) and 0.15 m in winter conditions (November 1 to April 30)

Figure 5