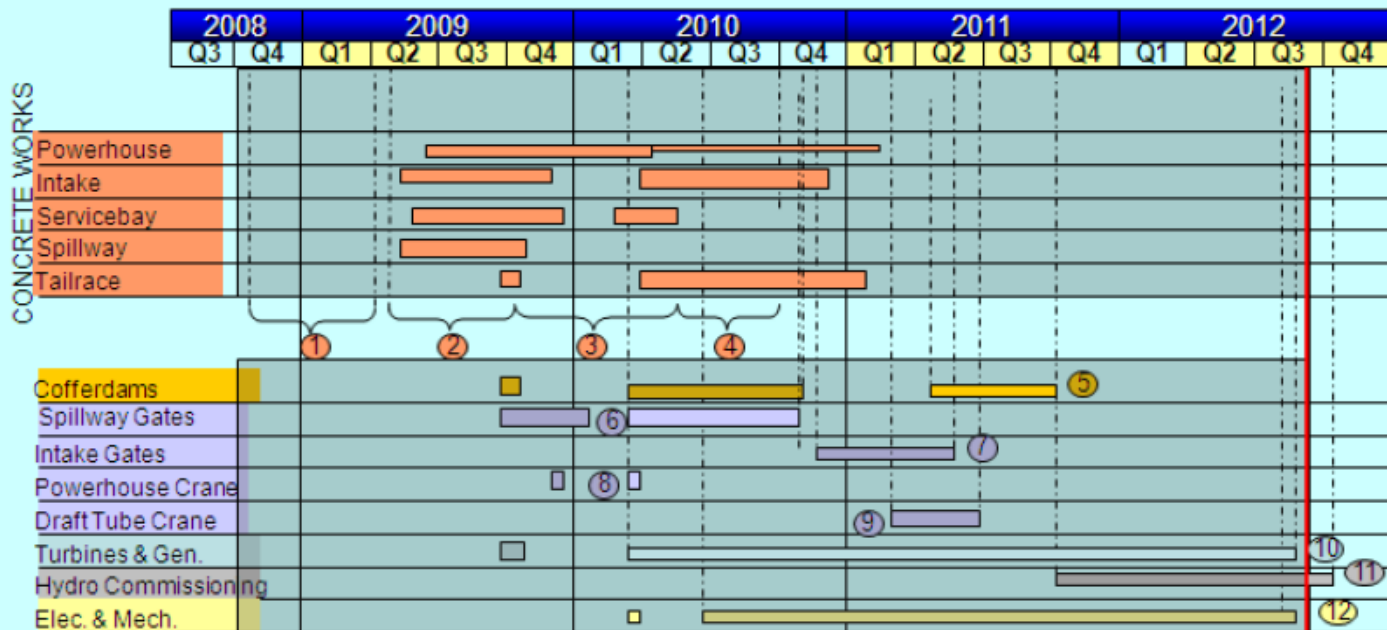


# CONSTRUCTION OVERVIEW AS OF August 31, 2012



- ① Planning & Infrastructure
- ⑤ Cofferdams, Main Dam & Excavations
- ⑨ Draft Tube Crane
- ② 2009 Summer Concrete
- ⑥ Spillway Gates/Guides/Hoists
- ⑩ Turbine & Generator Embedded and Rotating Parts
- ③ 2009/2010 Winter Concrete
- ⑦ Intake Gates/Guides/Hoists
- ⑪ Manitoba Hydro Final Commissioning
- ④ 2010 Summer Concrete
- ⑧ Powerhouse Crane
- ⑫ Electrical & Mechanical Contractor