

Wuskwatim Generating Station  
Monthly Compliance Report for August 2023

Wuskwatim Power Limited Partnership received Environment Act Licence No. 2699 and an Interim Water Power Act Licence in 2006 for the development of Wuskwatim Generating Station. Section 33 of the Environmental Act Licence for the Wuskwatim Generating Station requires regular monthly reporting on the Wuskwatim Hourly Water Level, Wuskwatim Mean Daily Water Level (with wind and wave effects eliminated) and the Birch Tree Lake Daily Change in Water Level.

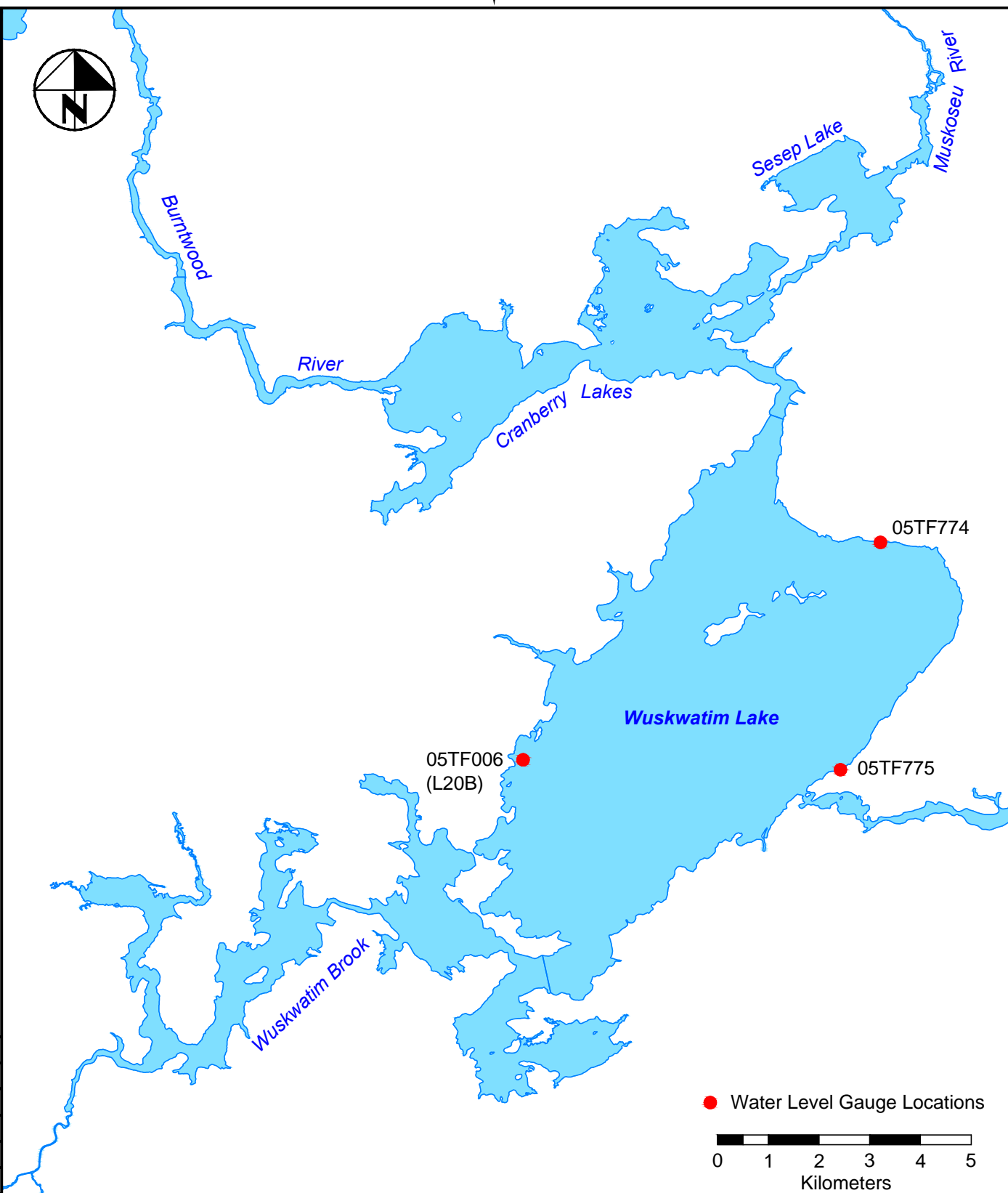
Figure 1 is a general location plan of the Wuskwatim Lake water level gauges used to generate the data for this report. Figure 2 is a general location plan of the Birch Tree Lake water level gauges.

Wuskwatim Lake Hourly Water Levels ranged between 233.78 m and 233.94 m for the month of August (Figure 3).

Wuskwatim Lake Mean Daily Water Level (with wind and wave effects eliminated) ranged between 233.82 m and 233.91 m for the month of August (Figure 4).

The maximum Birch Tree Lake Daily Change in Water Level was 0.12 m (Figure 5)

A SIZE - 184 X 279



● Water Level Gauge Locations

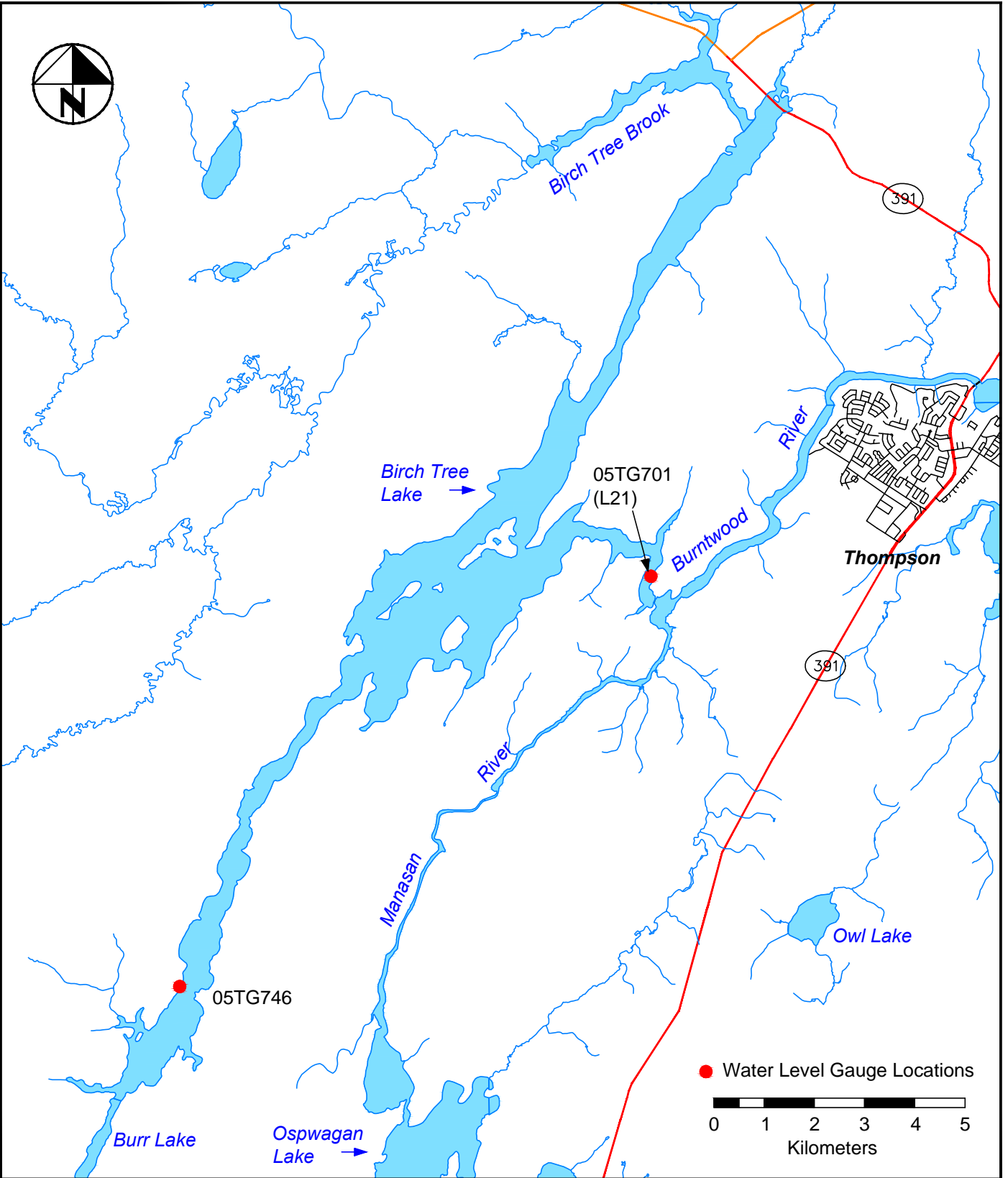
0 1 2 3 4 5  
Kilometers

FOR MICROFILMING USE ONLY

NOTED	NO.	DATE	REVISIONS	BY	CKD.	APP.
DESIGN			MANITOBA HYDRO			
TELEPHONE			WUSKWATIM GENERATING STATION			
ELECTRICAL			WATER LEVEL GAUGE			
F.P. ENGINEER			LOCATIONS ON			
MECHANICAL	DRAWN	K.R.	WUSKWATIM LAKE			
DISTRIBUTION	DESIGN	BG				
PROJECT	DSCALE	AS SHOWN				
CONSTRUCTION	PSCALE	1/8" = 1'-0"			SHT.	REV.
MANAGER	DATE	15/02/03			0001	00

AUTOCAD ORIGINAL

\* REDUCED SIZED PLOT



FOR MICROFILMING USE ONLY

NOTED	NO.	DATE	REVISIONS	BY	CKD.	APP.
DESIGN			MANITOBA HYDRO WUSKWATIM GENERATING STATION <b>WATER LEVEL GAUGE                      LOCATIONS ON                      BIRCHTREE LAKE</b>			
TELEPHONE						
ELECTRICAL						
F.P. ENGINEER						
MECHANICAL	DRAWN	K.R.				
DISTRIBUTION	DESIGN	BG				
PROJECT	DSCALE	AS SHOWN				
CONSTRUCTION	PSCALE	1/8"=1'-0"				
MANAGER	DATE	15/02/03				
				SHT.	REV.	
				0001	00	

AUTOCAD ORIGINAL

### Wuskwatim Generating Station - Wuskwatim Lake Hourly Water Levels Monthly Compliance Report for August 2023

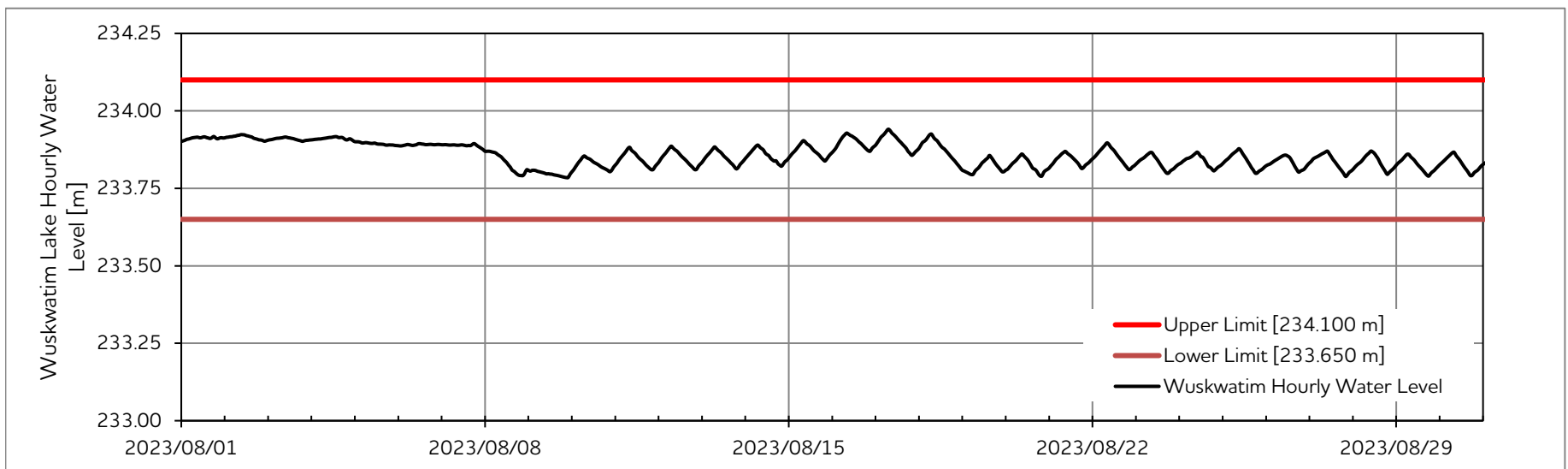
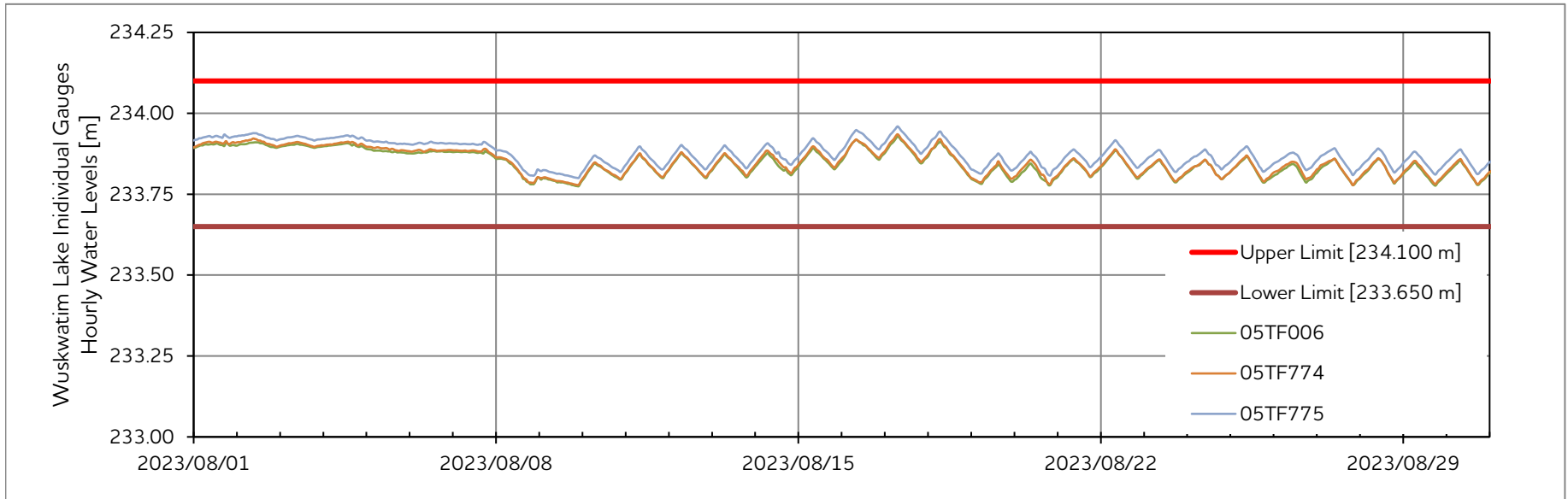
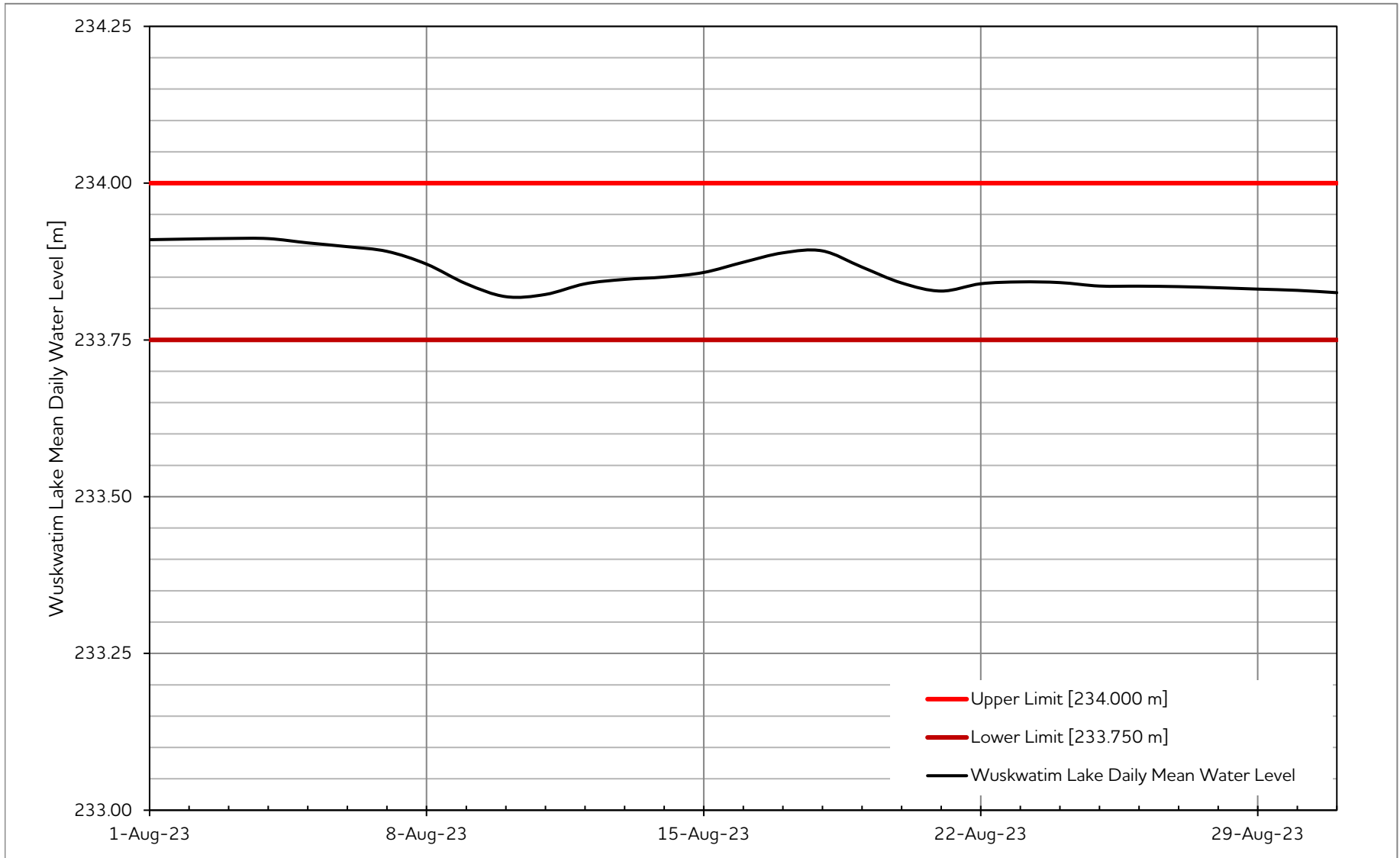


Figure 3

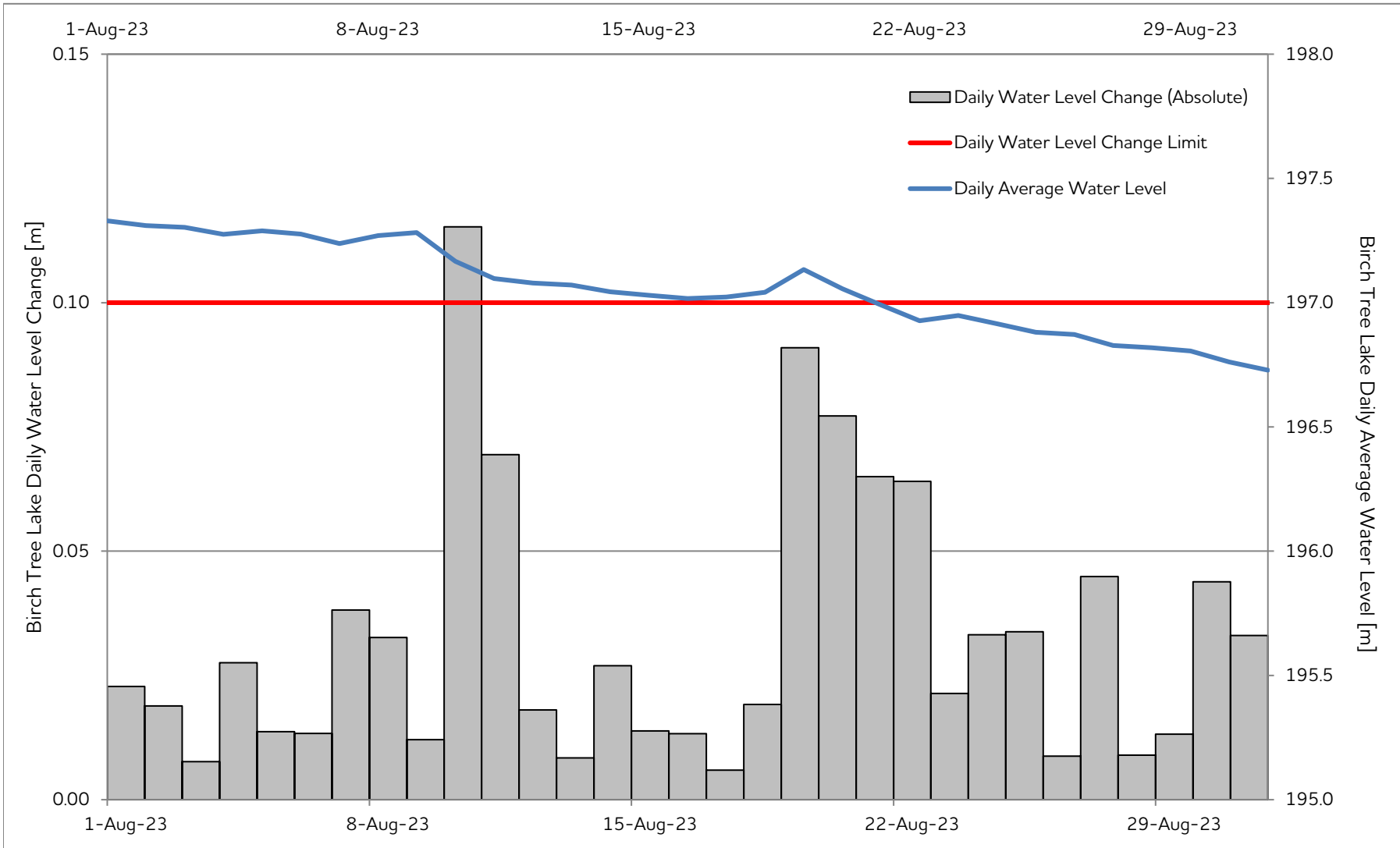
Wuskwatim Generating Station - Wuskwatim Lake Mean Daily Water Level  
Monthly Compliance Report for August 2023



Note: Wuskwatim Lake Mean Daily Water Level is calculated using Wuskwatim Lake gauges 05TF006, 05TF774, & 05TF775

Figure 4

**Wuskwatim Generating Station - Birch Tree Lake Daily Water Level Change  
Monthly Compliance Report for August 2023**



Note: The Birch Tree Lake Daily Water Level Change is calculated using Birch Tree Lake gauges 05TG701, 05TG746  
 The daily water level change limit is equal to 0.1 m in open water conditions (May 1 to October 31) and 0.15 m in winter conditions (November 1 to April 30)

Figure 5