

Wuskwatim Generating Station
Monthly Compliance Report for June 2025

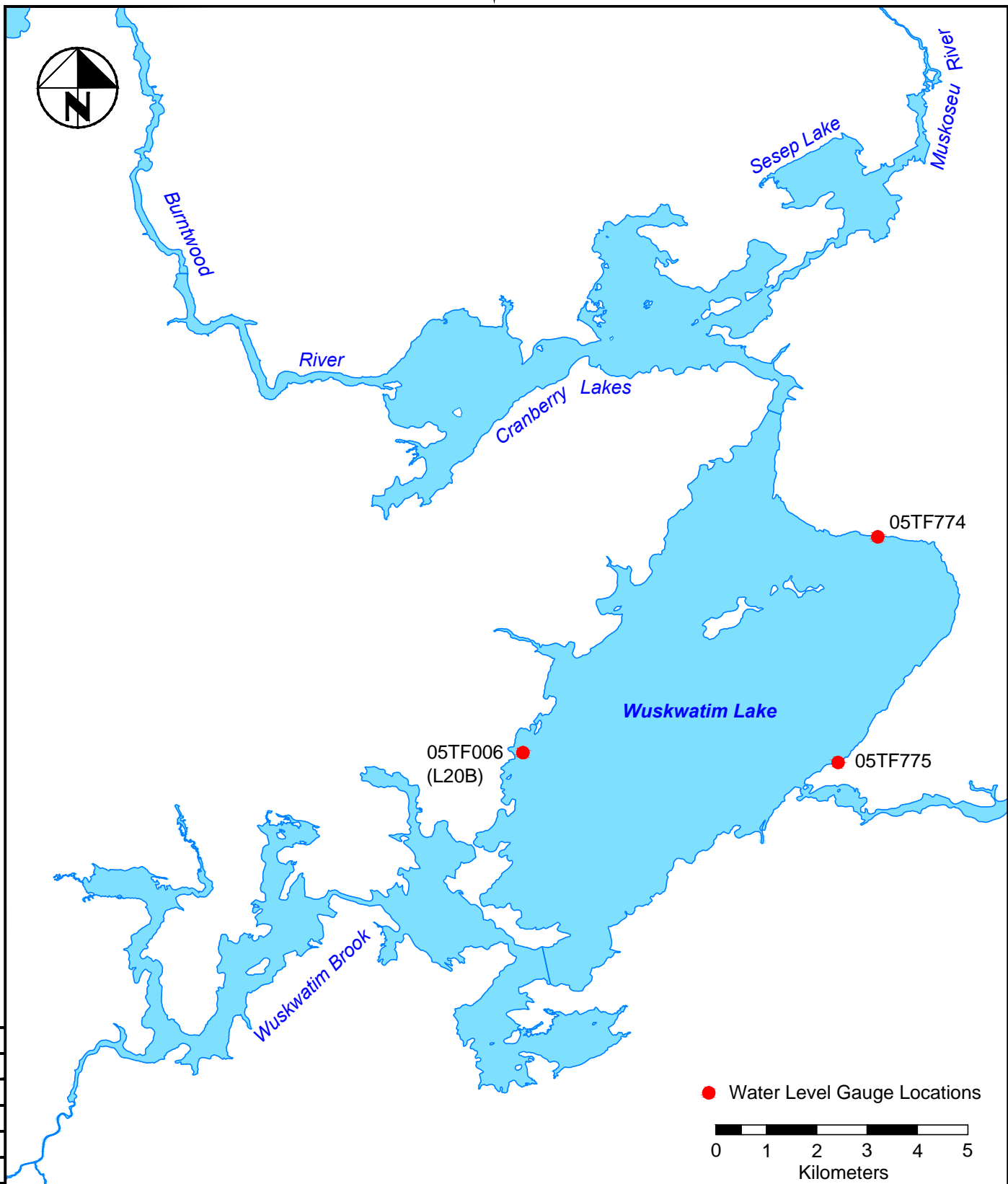
Wuskwatim Power Limited Partnership received Environment Act Licence No. 2699 and an Interim Water Power Act Licence in 2006 for the development of Wuskwatim Generating Station. Section 33 of the Environmental Act Licence for the Wuskwatim Generating Station requires regular monthly reporting on the Wuskwatim Hourly Water Level, Wuskwatim Mean Daily Water Level (with wind and wave effects eliminated) and the Birch Tree Lake Daily Change in Water Level.

Figure 1 is a general location plan of the Wuskwatim Lake water level gauges used to generate the data for this report. Figure 2 is a general location plan of the Birch Tree Lake water level gauges.

Wuskwatim Lake Hourly Water Levels ranged between 233.75 m and 233.94 m for the month of June (Figure 3).

Wuskwatim Lake Mean Daily Water Level (with wind and wave effects eliminated) ranged between 233.77 m and 233.91 m for the month of June (Figure 4).

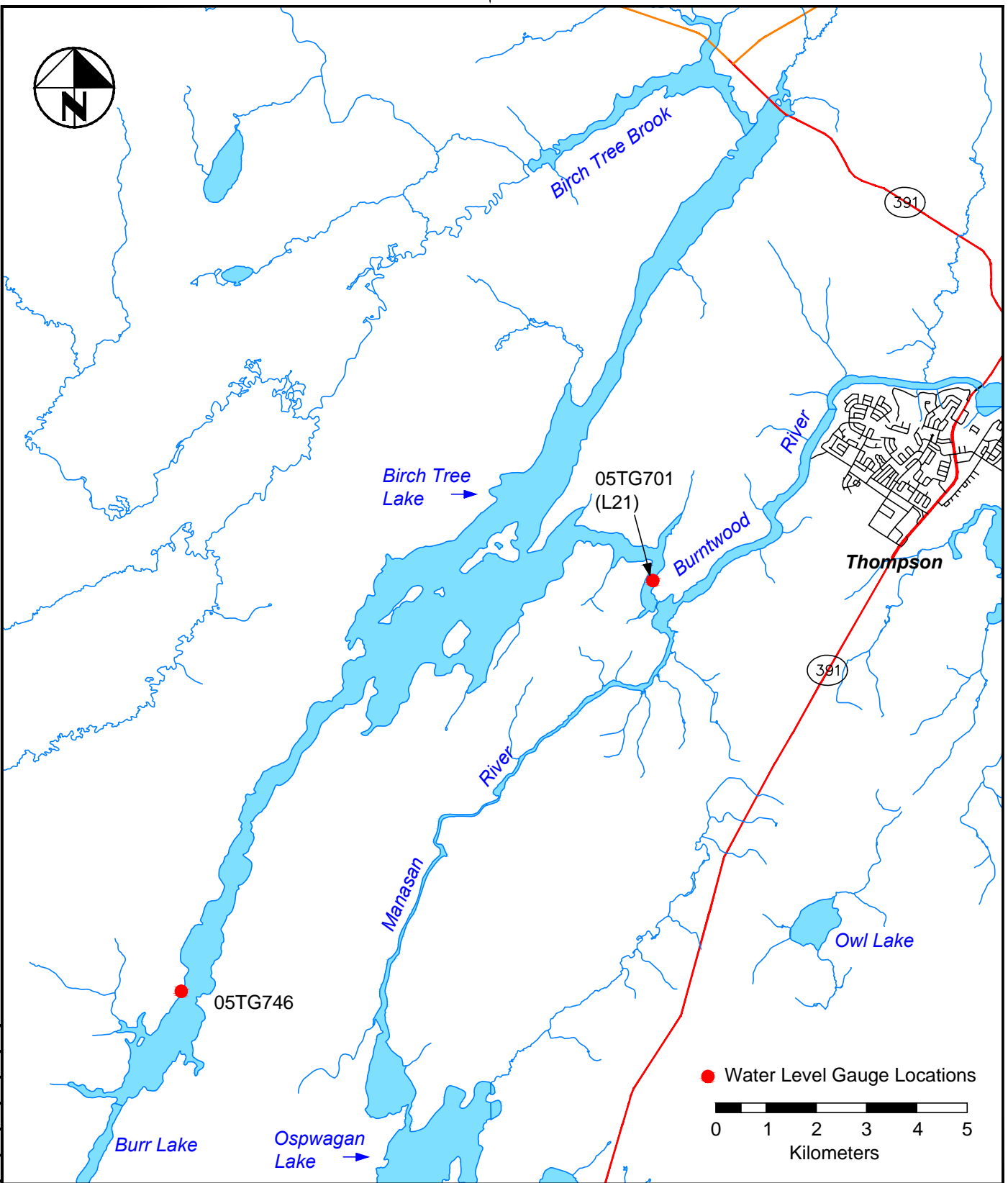
The maximum Birch Tree Lake Daily Change in Water Level was 0.18 m (Figure 5)



FOR MICROFILMING USE ONLY

NOTED	NO.	DATE	REVISIONS	BY	CKD.	APP.	
DESIGN			MANITOBA HYDRO				
TELEPHONE			WUSKWATIM GENERATING STATION				
ELECTRICAL			WATER LEVEL GAUGE LOCATIONS ON WUSKWATIM LAKE				
F.P. ENGINEER							
MECHANICAL	DRAWN	K.R.					
DISTRIBUTION	DESIGN	BG					
PROJECT	DSCALE	AS SHOWN					
CONSTRUCTION	PSCALE	1/8"=1'-0"					
MANAGER	DATE	15/02/03				SHT.	REV.
						0001	00

AUTOCAD ORIGINAL



FOR MICROFILMING USE ONLY

NOTED	NO.	DATE	REVISIONS	BY	CKD.	APP.
DESIGN			MANITOBA HYDRO			
TELEPHONE			WUSKWATIM GENERATING STATION			
ELECTRICAL			WATER LEVEL GAUGE LOCATIONS ON BIRCHTREE LAKE			
F.P. ENGINEER						
MECHANICAL	DRAWN	K.R.				
DISTRIBUTION	DESIGN	BG				
PROJECT	DS	SCALE AS SHOWN				
CONSTRUCTION	PS	SCALE 1/8"=1'-0"				
MANAGER	DATE	15/02/03				
				SHT.	REV.	
				0001	00	

AUTOCAD ORIGINAL

Wuskwatim Generating Station - Wuskwatim Lake Hourly Water Levels
Monthly Compliance Report for June 2025

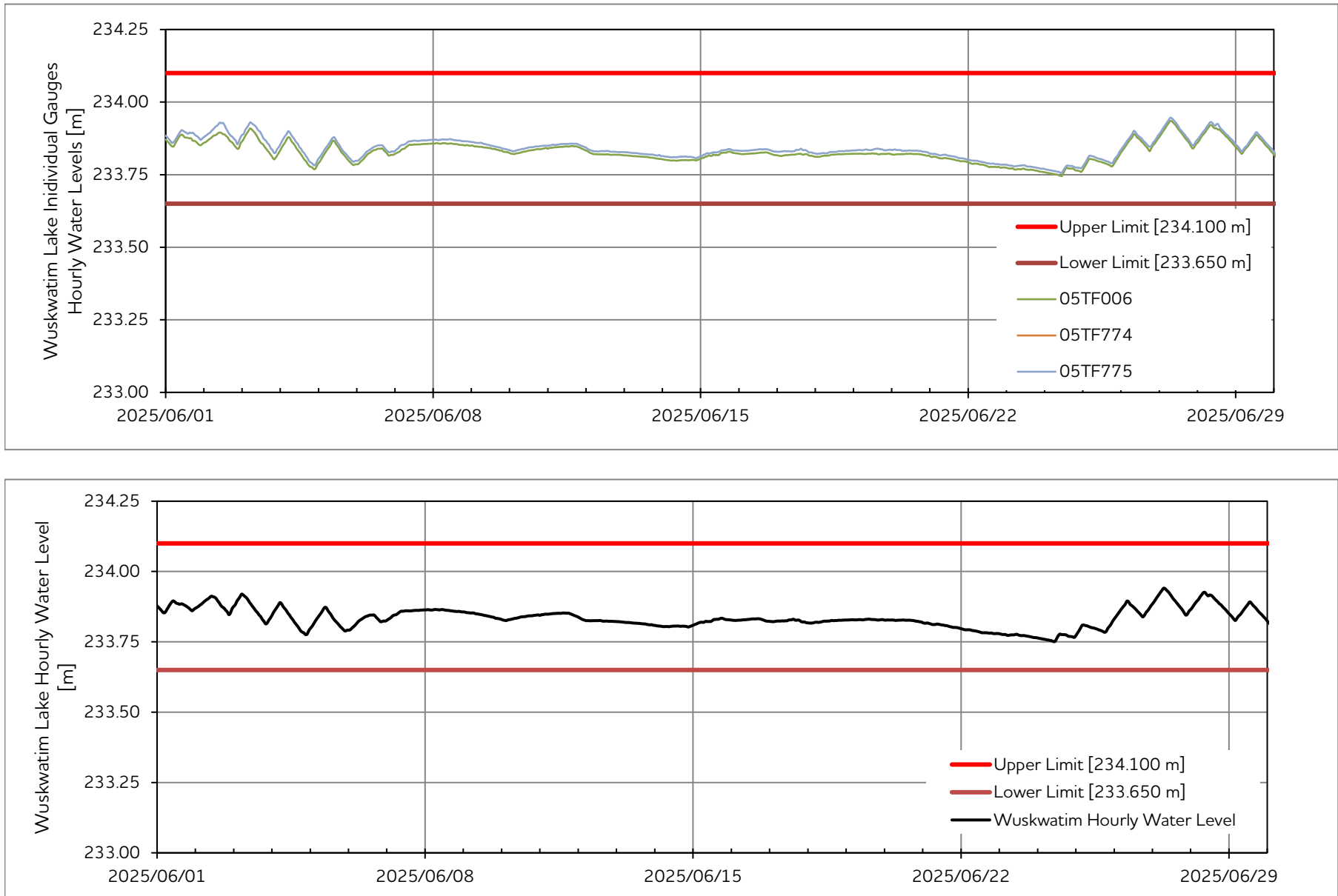
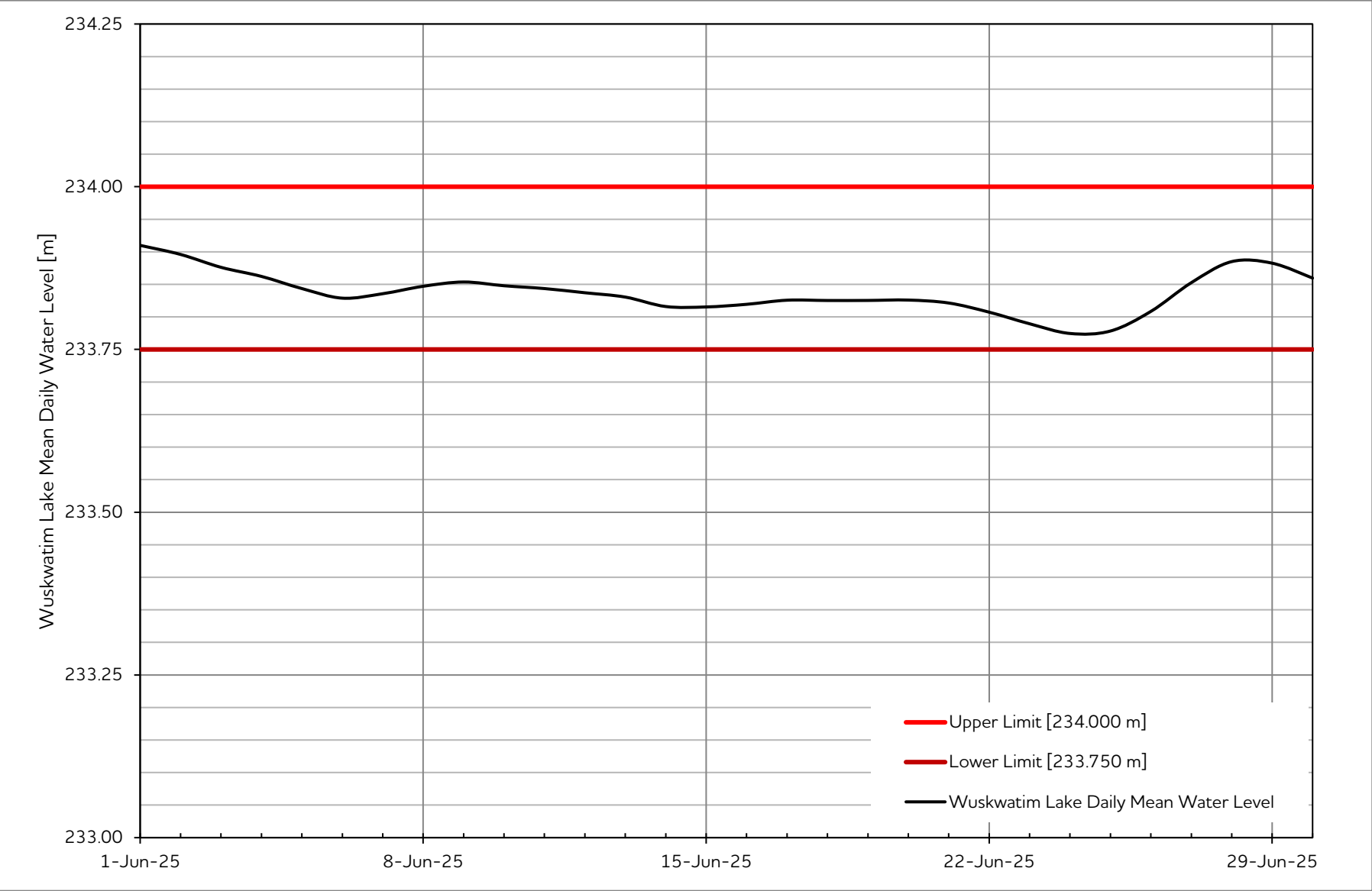


Figure 3

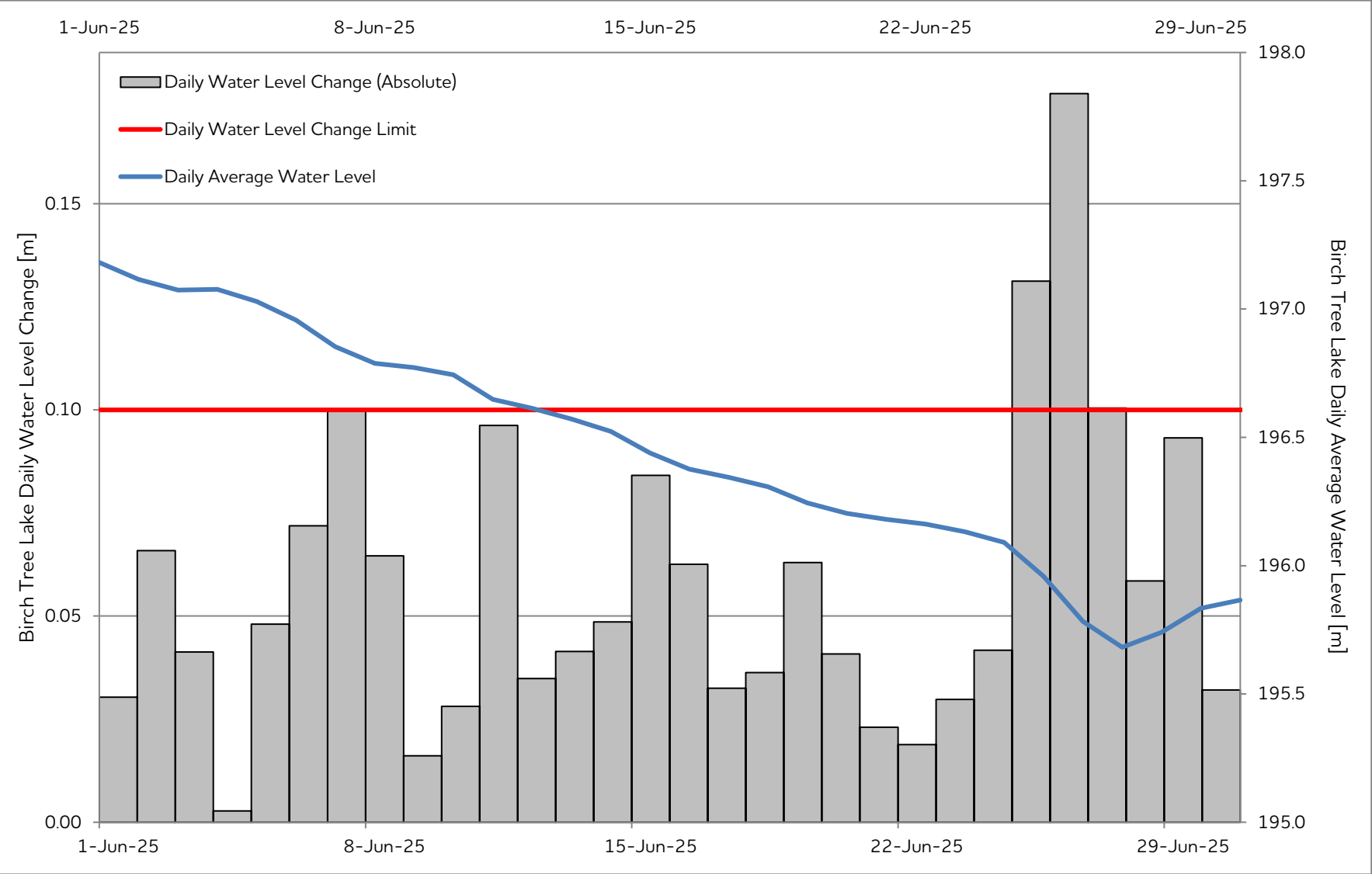
Wuskwatim Generating Station - Wuskwatim Lake Mean Daily Water Level
Monthly Compliance Report for June 2025



Note: Wuskwatim Lake Mean Daily Water Level is calculated using Wuskwatim Lake gauges 05TF006, 05TF774, & 05TF775

Figure 4

Wuskwatim Generating Station - Birch Tree Lake Daily Water Level Change
Monthly Compliance Report for June 2025



Note: The Birch Tree Lake Daily Water Level Change is calculated using Birch Tree Lake gauges 05TG701, 05TG746.
The daily water level change limit is equal to 0.1 m in open water conditions (May 1 to October 31) and 0.15 m in winter conditions (November 1 to April 30)

Figure 5